



## Five Star Juice

22873 Lockness Ave - Torrence, CA  
90501

## Sample 432-022125-388

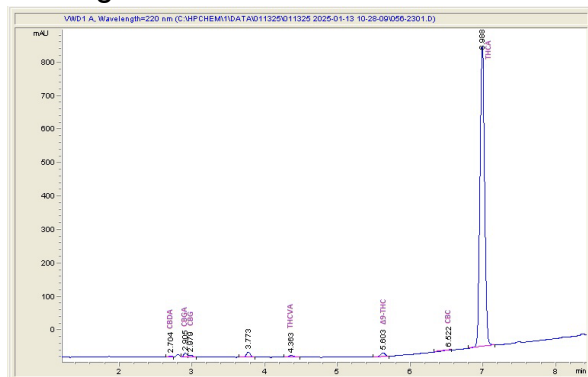
Little's Preroll - Kush

Sample Submitted: 02-17-2025; Report Date: 02-21-2025

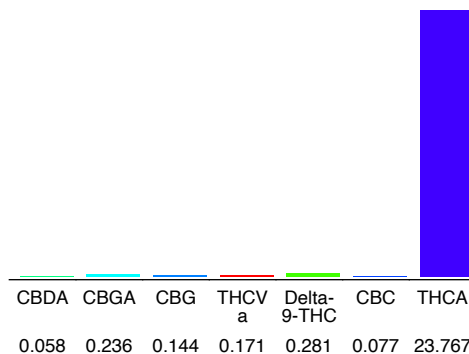
## Little's Preroll - Kush

Plant Material: Hemp Flower

### Chromatogram



### Cannabinoid Profile



### Cannabinoid Profile by HPLC

0.28%

Delta-9-THC

0.00%

CBD

24.73%

Total Cannabinoids

Cannabinoid	% wt	mg/g
CBDA	0.058	0.58
CBGA	0.236	2.36
CBG	0.144	1.44
THCVa	0.171	1.71
Delta-9-THC	0.281	2.81
CBC	0.077	0.77
THCA	23.77	237.67
<b>Total Cannabinoids</b>	<b>24.73</b>	<b>247.3</b>
<b>Calculated Total THC</b>	<b>21.12</b>	<b>211.25</b>
<b>Calculated CBD Yield</b>	<b>0.05</b>	<b>0.51</b>

Calculated Total THC = Delta-9-THC + 0.877 \* THCA

Calculated Maximum CBD Yield = CBD + 0.877 \* CBDA

### Marin Analytics, LLC

250 Bel Marin Keys Blvd, Suite D4  
Novato, CA 94949

833-321-TEST / info@marinanalytics.com

Mike Clemmons  
Lab Manager

This sample has been tested by Marin Analytics, LLC using valid testing methodologies and a quality system. Values reported relate only to the sample tested. Marin Analytics, LLC makes no claims as to the efficacy, safety, or other risks associated with any detected or non-detected levels of any compounds reported herein. This Certificate shall not be reproduced except in full without the written approval of Marin Analytics, LLC. Copyright 2023 Marin Analytics, LLC All Rights Reserved.



## Five Star Juice

22873 Lockness Ave - Torrence, CA  
90501

## Sample 432-022125-389

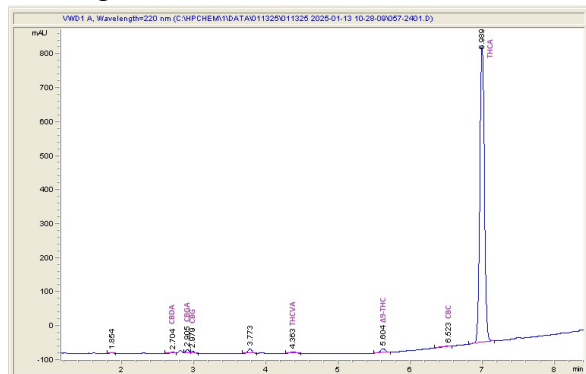
Little's Preroll - Cookies

Sample Submitted: 02-17-2025; Report Date: 02-21-2025

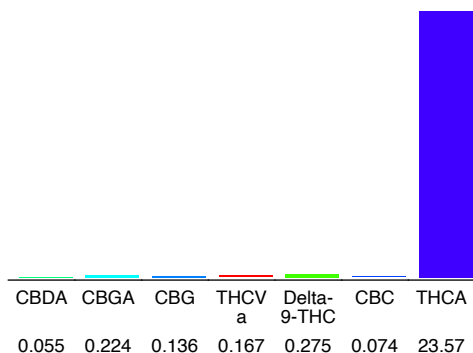
## Little's Preroll - Cookies

Plant Material: Hemp Flower

### Chromatogram



### Cannabinoid Profile



### Cannabinoid Profile by HPLC

0.28%

Delta-9-THC

0.00%

CBD

24.50%

Total Cannabinoids

Cannabinoid	% wt	mg/g
CBDA	0.055	0.55
CBGA	0.224	2.24
CBG	0.136	1.36
THCVa	0.167	1.67
Delta-9-THC	0.275	2.75
CBC	0.074	0.74
THCA	23.57	235.7
<b>Total Cannabinoids</b>	<b>24.50</b>	<b>245.0</b>
<b>Calculated Total THC</b>	<b>20.95</b>	<b>209.46</b>
<b>Calculated CBD Yield</b>	<b>0.05</b>	<b>0.48</b>

Calculated Total THC = Delta-9-THC + 0.877 \* THCA

Calculated Maximum CBD Yield = CBD + 0.877 \* CBDA

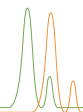
#### Marin Analytics, LLC

250 Bel Marin Keys Blvd, Suite D4  
Novato, CA 94949

833-321-TEST / info@marinanalytics.com

Mike Clemmons  
Lab Manager

This sample has been tested by Marin Analytics, LLC using valid testing methodologies and a quality system. Values reported relate only to the sample tested. Marin Analytics, LLC makes no claims as to the efficacy, safety, or other risks associated with any detected or non-detected levels of any compounds reported herein. This Certificate shall not be reproduced except in full without the written approval of Marin Analytics, LLC. Copyright 2023 Marin Analytics, LLC All Rights Reserved.



### Five Star Juice

22873 Lockness Ave - Torrance, CA  
90501

Sample 432-022125-390

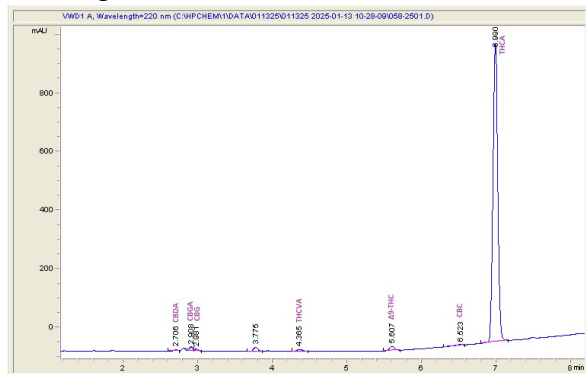
Littles Preroll - Runtz

Sample Submitted: 02-17-2025; Report Date: 02-21-2025

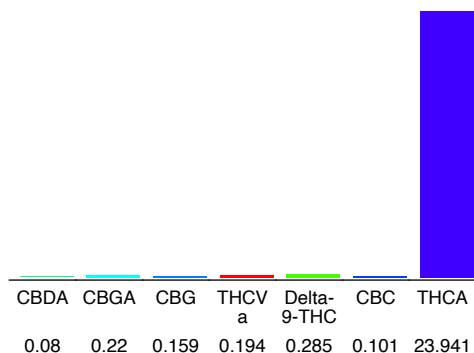
### Littles Preroll - Runtz

Plant Material: Hemp Flower

#### Chromatogram



#### Cannabinoid Profile



#### Cannabinoid Profile by HPLC

0.29%

Delta-9-THC

0.00%

CBD

24.98%

Total Cannabinoids

Cannabinoid	% wt	mg/g
CBDA	0.08	0.8
CBGA	0.22	2.2
CBG	0.159	1.59
THCVa	0.194	1.94
Delta-9-THC	0.285	2.85
CBC	0.101	1.01
THCA	23.94	239.41
<b>Total Cannabinoids</b>	<b>24.98</b>	<b>249.8</b>
<b>Calculated Total THC</b>	<b>21.28</b>	<b>212.81</b>
<b>Calculated CBD Yield</b>	<b>0.07</b>	<b>0.70</b>

Calculated Total THC = Delta-9-THC + 0.877 \* THCA

Calculated Maximum CBD Yield = CBD + 0.877 \* CBDA

#### Marin Analytics, LLC

250 Bel Marin Keys Blvd, Suite D4  
Novato, CA 94949

833-321-TEST / info@marinanalytics.com

Mike Clemmons  
Lab Manager

This sample has been tested by Marin Analytics, LLC using valid testing methodologies and a quality system. Values reported relate only to the sample tested. Marin Analytics, LLC makes no claims as to the efficacy, safety, or other risks associated with any detected or non-detected levels of any compounds reported herein. This Certificate shall not be reproduced except in full without the written approval of Marin Analytics, LLC. Copyright 2023 Marin Analytics, LLC All Rights Reserved.



Little High

Sample 425-092305-151

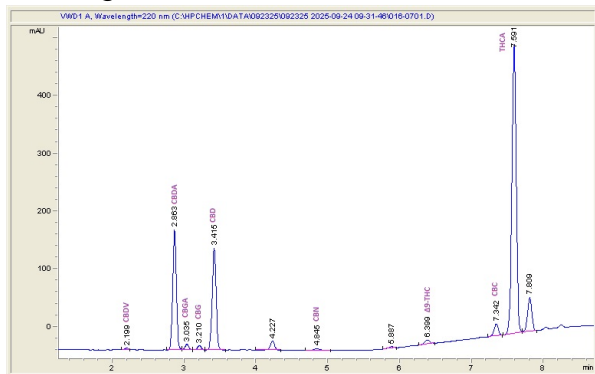
Littles - Purps

Sample Submitted: 09-23-2205; Report Date: 10-01-2025

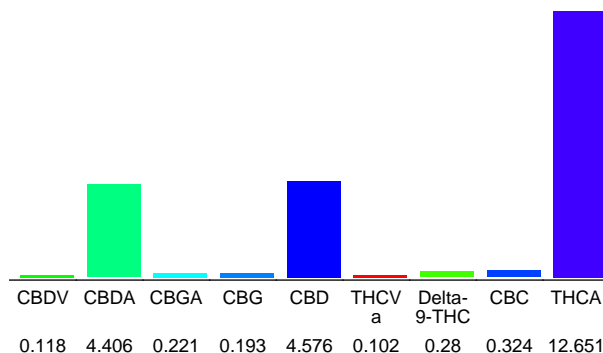
## Littles - Purps

Plant Material: Infused Flower

### Chromatogram



### Cannabinoid Profile



### Cannabinoid Profile by HPLC

0.28%

Delta-9-THC

4.58%

CBD

22.87%

Total Cannabinoids

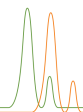
Cannabinoid	% wt	mg/g
CBDV	0.118	1.18
CBDA	4.406	44.06
CBGA	0.221	2.21
CBG	0.193	1.93
CBD	4.576	45.76
THCVa	0.102	1.02
Delta-9-THC	0.28	2.8
CBC	0.324	3.24
THCA	12.65	126.51
<b>Total Cannabinoids</b>	<b>22.87</b>	<b>228.7</b>
<b>Calculated Total THC</b>	<b>11.37</b>	<b>113.75</b>
<b>Calculated CBD Yield</b>	<b>8.44</b>	<b>84.40</b>
Calculated Total THC = Delta-9-THC + 0.877 * THCA		
Calculated Maximum CBD Yield = CBD + 0.877 * CBDA		

**Marin Analytics, LLC**250 Bel Marin Keys Blvd, Suite D4  
Novato, CA 94949

833-321-TEST / info@marinanalytics.com

**Mike Clemmons**  
Lab Manager

This sample has been tested by Marin Analytics, LLC using valid testing methodologies and a quality system. Values reported relate only to the sample tested. Marin Analytics, LLC makes no claims as to the efficacy, safety, or other risks associated with any detected or non-detected levels of any compounds reported herein. This Certificate shall not be reproduced except in full without the written approval of Marin Analytics, LLC. Copyright 2023 Marin Analytics, LLC All Rights Reserved.



Little High

Sample 425-092325-152

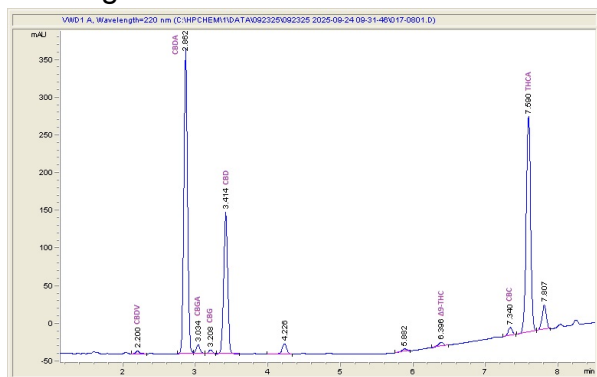
Littles - Maui Wowie

Sample Submitted: 09-23-2025; Report Date: 10-01-2025

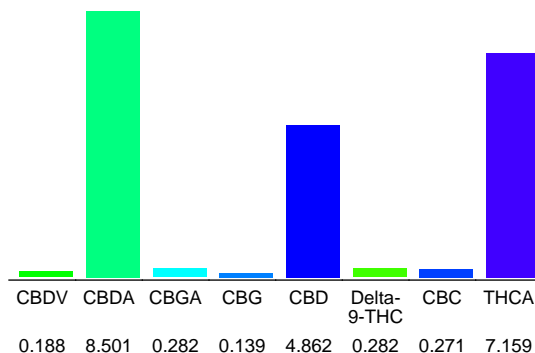
## Littles - Maui Wowie

Plant Material: Infused Flower

### Chromatogram



### Cannabinoid Profile



### Cannabinoid Profile by HPLC

0.28%

Delta-9-THC

4.86%

CBD

21.68%

Total Cannabinoids

Cannabinoid	% wt	mg/g
CBDV	0.188	1.88
CBDA	8.501	85.01
CBGA	0.282	2.82
CBG	0.139	1.39
CBD	4.862	48.62
Delta-9-THC	0.282	2.82
CBC	0.271	2.71
THCA	7.159	71.59
<b>Total Cannabinoids</b>	<b>21.68</b>	<b>216.8</b>
<b>Calculated Total THC</b>	<b>6.56</b>	<b>65.60</b>
<b>Calculated CBD Yield</b>	<b>12.32</b>	<b>123.17</b>

Calculated Total THC = Delta-9-THC + 0.877 \* THCA

Calculated Maximum CBD Yield = CBD + 0.877 \* CBDA

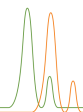
#### Marin Analytics, LLC

250 Bel Marin Keys Blvd, Suite D4  
Novato, CA 94949

833-321-TEST / info@marinanalytics.com

**Mike Clemmons**  
Lab Manager

This sample has been tested by Marin Analytics, LLC using valid testing methodologies and a quality system. Values reported relate only to the sample tested. Marin Analytics, LLC makes no claims as to the efficacy, safety, or other risks associated with any detected or non-detected levels of any compounds reported herein. This Certificate shall not be reproduced except in full without the written approval of Marin Analytics, LLC. Copyright 2023 Marin Analytics, LLC All Rights Reserved.



Little High

Sample 425-092325-153

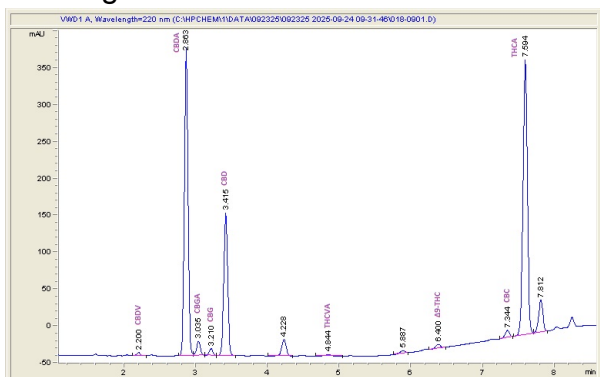
Littles - Blue Dream

Sample Submitted: 09-23-2025; Report Date: 10-01-2025

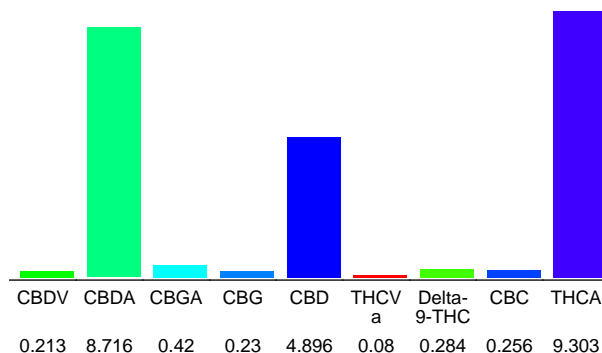
## Littles - Blue Dream

Plant Material: Infused Flower

### Chromatogram



### Cannabinoid Profile



### Cannabinoid Profile by HPLC

0.28%

Delta-9-THC

4.90%

CBD

24.40%

Total Cannabinoids

Cannabinoid	% wt	mg/g
CBDV	0.213	2.13
CBDA	8.716	87.16
CBGA	0.42	4.2
CBG	0.23	2.3
CBD	4.896	48.96
THCVa	0.08	0.8
Delta-9-THC	0.284	2.84
CBC	0.256	2.56
THCA	9.303	93.03
<b>Total Cannabinoids</b>	<b>24.40</b>	<b>244.0</b>
<b>Calculated Total THC</b>	<b>8.44</b>	<b>84.43</b>
<b>Calculated CBD Yield</b>	<b>12.54</b>	<b>125.40</b>
Calculated Total THC = Delta-9-THC + 0.877 * THCA		
Calculated Maximum CBD Yield = CBD + 0.877 * CBDA		

**Marin Analytics, LLC**250 Bel Marin Keys Blvd, Suite D4  
Novato, CA 94949

833-321-TEST / info@marinanalytics.com

**Mike Clemmons**  
Lab Manager

This sample has been tested by Marin Analytics, LLC using valid testing methodologies and a quality system. Values reported relate only to the sample tested. Marin Analytics, LLC makes no claims as to the efficacy, safety, or other risks associated with any detected or non-detected levels of any compounds reported herein. This Certificate shall not be reproduced except in full without the written approval of Marin Analytics, LLC. Copyright 2023 Marin Analytics, LLC All Rights Reserved.