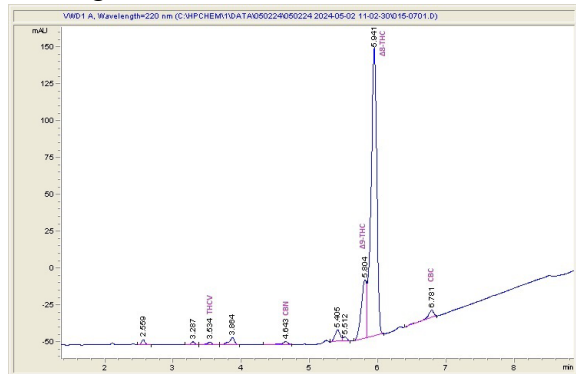
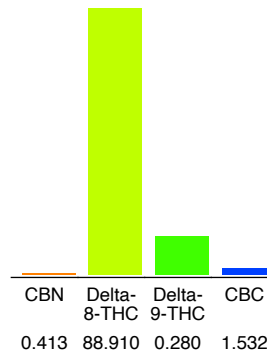


**DabWoods****Sample 432-061324-498****DabWoods - D8 Live Resin - Malibu Haze**

Sample Submitted: 05-16-2024; Report Date: 05-24-2024

DabWoods - D8 Live Resin - Malibu Haze

Extract / Concentrate

Chromatogram**Cannabinoid Profile****Cannabinoid Profile by HPLC****0.28%**

Delta-9-THC

0.00%

CBD

91.14%

Total Cannabinoids

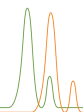
| Cannabinoid | % wt | mg/g |
|---|--------------|--------------|
| CBN | 0.413 | 4.13 |
| Delta-8-THC | 88.91 | 889.10 |
| Delta-9-THC | 0.28 | 2.80 |
| CBC | 1.532 | 15.32 |
| Total Cannabinoids | 91.14 | 911.4 |
| Calculated Total THC | 1.62 | 16.2 |
| Calculated CBD Yield | 0.00 | 0.00 |
| Calculated Total THC = Delta-9-THC + 0.877 * THCA | | |
| Calculated Maximum CBD Yield = CBD + 0.877 * CBDA | | |

Marin Analytics, LLC250 Bel Marin Keys Blvd, Suite D4
Novato, CA 94949

833-321-TEST / info@marinanalytics.com

Mike Clemmons
Lab Manager

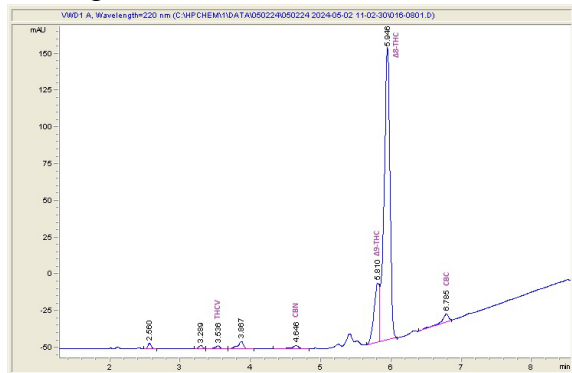
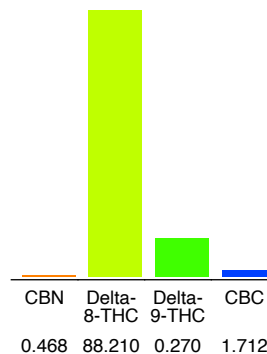
This sample has been tested by Marin Analytics, LLC using valid testing methodologies and a quality system. Values reported relate only to the sample tested. Marin Analytics, LLC makes no claims as to the efficacy, safety, or other risks associated with any detected or non-detected levels of any compounds reported herein. This Certificate shall not be reproduced except in full without the written approval of Marin Analytics, LLC. Copyright 2023 Marin Analytics, LLC All Rights Reserved.

**DabWoods****Sample 432-061324-499****DabWoods - D8 Live Resin - GG4**

Sample Submitted: 05-16-2024; Report Date: 05-24-2024

DabWoods - D8 Live Resin - GG4

Extract / Concentrate

Chromatogram**Cannabinoid Profile****Cannabinoid Profile by HPLC****0.27%**

Delta-9-THC

0.00%

CBD

90.66%

Total Cannabinoids

| Cannabinoid | % wt | mg/g |
|-----------------------------|--------------|--------------|
| CBN | 0.468 | 4.68 |
| Delta-8-THC | 88.91 | 882.10 |
| Delta-9-THC | 0.270 | 2.70 |
| CBC | 1.712 | 17.12 |
| Total Cannabinoids | 90.66 | 906.6 |
| Calculated Total THC | 1.77 | 17.7 |
| Calculated CBD Yield | 0.00 | 0.00 |

Calculated Total THC = Delta-9-THC + 0.877 * THCA

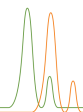
Calculated Maximum CBD Yield = CBD + 0.877 * CBDA

Marin Analytics, LLC250 Bel Marin Keys Blvd, Suite D4
Novato, CA 94949

833-321-TEST / info@marinanalytics.com

Mike Clemmons
Lab Manager

This sample has been tested by Marin Analytics, LLC using valid testing methodologies and a quality system. Values reported relate only to the sample tested. Marin Analytics, LLC makes no claims as to the efficacy, safety, or other risks associated with any detected or non-detected levels of any compounds reported herein. This Certificate shall not be reproduced except in full without the written approval of Marin Analytics, LLC. Copyright 2023 Marin Analytics, LLC All Rights Reserved.



DabWoods

Sample 432-061324-497

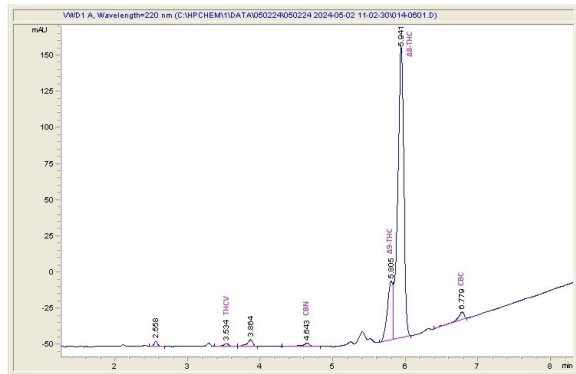
DabWoods - D8 Live Resin - Blue Banana

Sample Submitted: 05-16-2024; Report Date: 05-24-2024

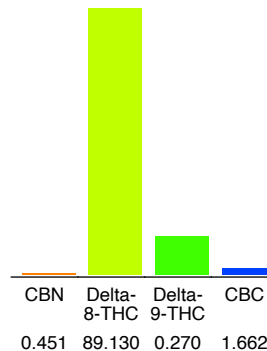
DabWoods - D8 Live Resin - Blue Banana

Extract / Concentrate

Chromatogram



Cannabinoid Profile



Cannabinoid Profile by HPLC

0.27%

Delta-9-THC

0.00%

CBD

91.51%

Total Cannabinoids

| Cannabinoid | % wt | mg/g |
|-----------------------------|--------------|--------------|
| CBN | 0.451 | 4.51 |
| Delta-8-THC | 89.13 | 891.30 |
| Delta-9-THC | 0.27 | 2.70 |
| CBC | 1.662 | 16.62 |
| Total Cannabinoids | 91.51 | 915.1 |
| Calculated Total THC | 1.73 | 17.3 |
| Calculated CBD Yield | 0.00 | 0.00 |

Calculated Total THC = Delta-9-THC + 0.877 * THCA

Calculated Maximum CBD Yield = CBD + 0.877 * CBDA

Marin Analytics, LLC250 Bel Marin Keys Blvd, Suite D4
Novato, CA 94949

833-321-TEST / info@marinanalytics.com

Mike Clemmons
Lab Manager

This sample has been tested by Marin Analytics, LLC using valid testing methodologies and a quality system. Values reported relate only to the sample tested. Marin Analytics, LLC makes no claims as to the efficacy, safety, or other risks associated with any detected or non-detected levels of any compounds reported herein. This Certificate shall not be reproduced except in full without the written approval of Marin Analytics, LLC. Copyright 2023 Marin Analytics, LLC All Rights Reserved.